

ANATOMICALLY CONTOURED

**With Low-Profile
Fixation**

DISTAL POSTERIOR/ LATERAL FIBULAR PLATES

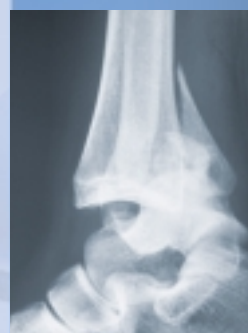
Available with 2, 4, 6, 8, 10, 12, 14, 16, 18, and 20 holes in both right and left configurations (Use 2.7mm, 3.5mm and 4.0mm screws).



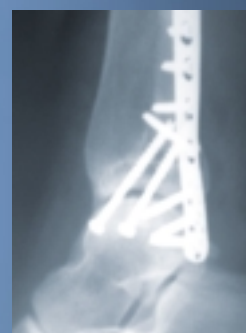
Preoperative



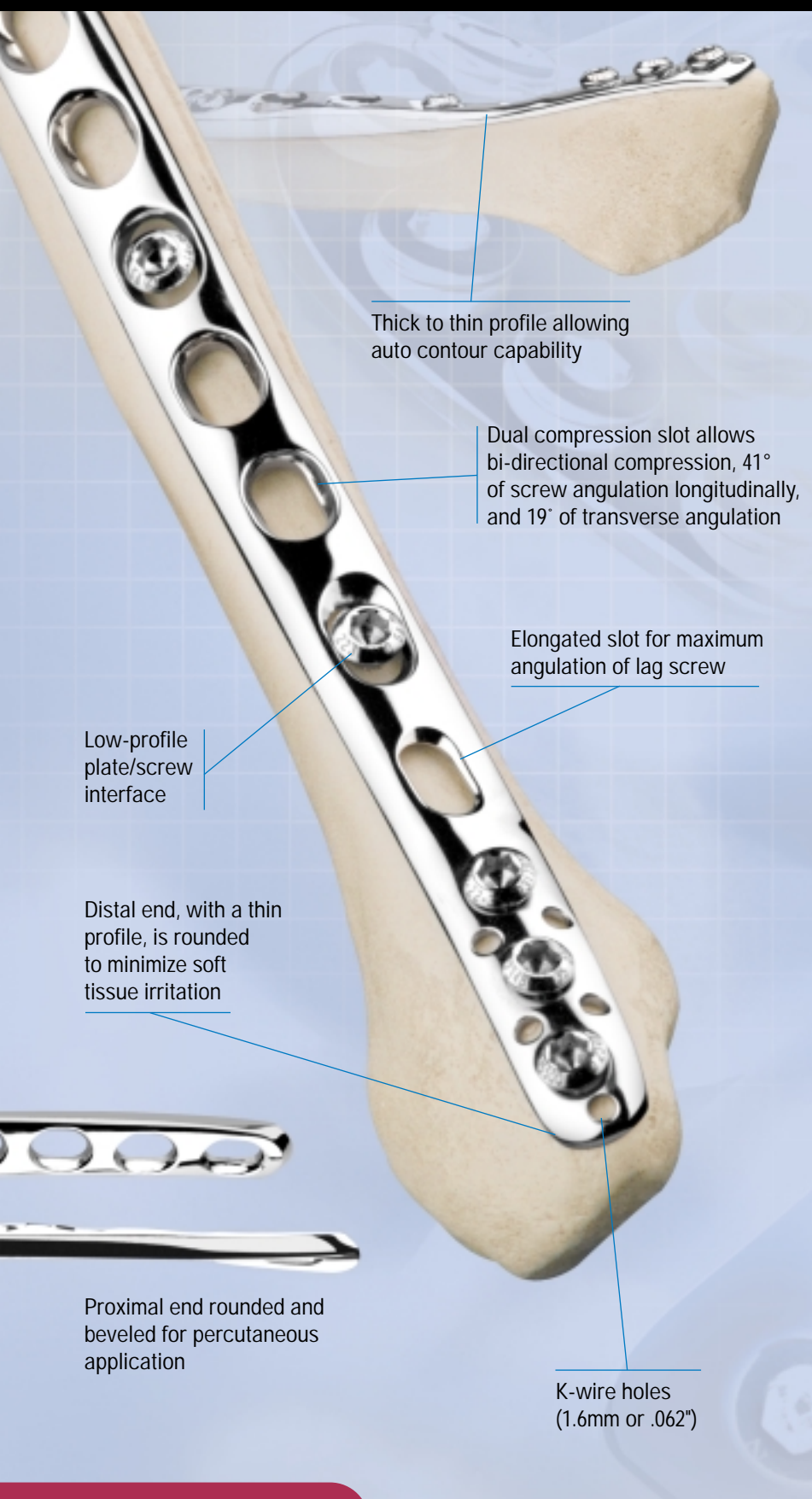
Postoperative



Preoperative



Postoperative



DISTAL POSTERIOR/LATERAL FIBULAR PLATE

Product Information

Distal Fibular Plates: Stainless Steel

For use with:

- Periarticular 3.5mm Cortical Screws with 2.7mm head, self-tapping*
- 2.7mm Mini Fragment Cortical Screws
- Forte® Distal Radial Plate System 4.0mm partially or fully threaded Cancellous Screws



REDUCED PROFILE SCREWS

The head size of the Periarticular screws has been reduced significantly to create a nearly flush profile when used with a plate or independently.

DISTAL POSTERIOR/ LATERAL FIBULAR PLATE

Left	Right	Plate Holes	Length	Profile	Thickness	Width
2347-16-02	2347-15-02	2	51mm	Distal Segment	1.0mm	8mm
2347-16-04	2347-15-04	4	74mm	Shaft	2.5mm	8mm
2347-16-06	2347-15-06	6	95mm			
2347-16-08	2347-15-08	8	116mm			
2347-16-10	2347-15-10	10	136mm			
2347-16-12	2347-15-12	12	157mm			
2347-16-14	2347-15-14	14	178mm			
2347-16-16	2347-15-16	16	199mm			
2347-16-18	2347-15-18	18	220mm			
2347-16-20	2347-15-20	20	241mm			

SCREW ANGULATION

Screw Type	Shaft Angulation (Dual Compression Slot)		Head Angulation (Round Hole)	
	Longitudinal	Transverse	Longitudinal	Transverse
2.7mm Cortical Screw	41°	19°	85°	22°
3.5mm Cortical Screw (w/2.7mm Head)*	37°	15°	78°	19°

BONE SCREW OPTIONS

Screw	Cat No.	Length Options (mm)
2.7mm Cortical Screws, Self-Tapping	4827-mm-01	6, 7, 8, 9, 10, 12, 14, 16, 18, 20, 22, 24, 26, 28, 30, 32, 34, 36, 38, 40, 42, 44, 45, 46, 48, 50, 52, 54, 55, 56, 58, 60, 65, 70
3.5mm Cortical Screws with 2.7mm Head, Self-Tapping*	2348-mm-35	8, 10, 12, 14, 16, 18, 20, 22, 24, 26, 28, 30, 32, 34, 36, 38, 40, 42, 44, 46, 48, 50, 52, 54, 56, 58, 60, 65, 70, 75, 80, 85, 90, 95, 100, 105, 110
Forte 4.0mm Partially Threaded Cancellous Screws	2480-mm-40	10, 12, 14, 16, 18, 20, 22, 24, 26, 28, 30, 32, 34, 36, 38, 40
Forte 4.0mm Fully Threaded Cancellous Screws	2480-mm-41	10, 12, 14, 16, 18, 20, 22, 24, 26, 28, 30, 32, 34, 36, 38, 40

For use with the following instrument sets:

- Periarticular 2.7mm/3.5mm/4.0mm Screw and Instrument Tray #2348-000-00
- Mini and Small Fragment Instrument and Implant Sets
- Fibular Plate Case #2348-40
- Fibular Plate Standard Set #2347-000-06 (Includes; 4, 6, 8 Holes left and right Distal Lateral and Distal Posterior/Lateral Fibular Plates)

- Fibular Plate Expanded Set #2347-000-07 (Includes all Fibular Plates)

* For use with Mini Fragment Depth Gauge.



zimmer CE

0123

For more information about the Periarticular Plating System, contact your Zimmer representative, or visit us at www.zimmer.com.

